

CERTIFICAZIONE "EPA"

CERTIFICAZIONE "CE"

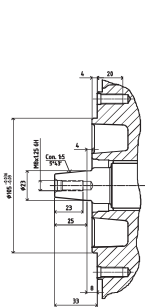


\* Quadro avviamento

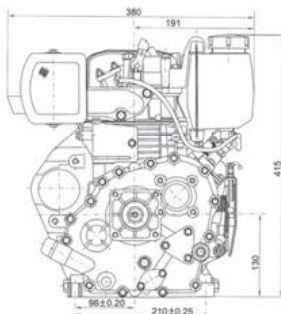
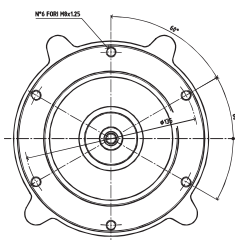
### Caratteristiche tecniche

|   |  |  |   |  |
|---|--|--|---|--|
| <b>Alesaggio (mm)</b><br>70x55          | <b>Cilindrata (cc)</b><br>211          | <b>Rapporto di compressione</b><br>20:1      | <b>Potenza continua (Hp/rpm)</b><br>3.8/3000 - 4.2/3600 | <b>Potenza massima (Hp/rpm)</b><br>4.2/3000 - 4.7/3600 |
| <b>Giri/minuto (rpm)</b><br>3000 - 3600 | <b>Avviamento</b><br>MANUALE/ELETRICO* | <b>Senso di rotazione (volano)</b><br>ORARIO | <b>Carburante</b><br>GASOLIO                            | <b>Capacità serbatoio (litri)</b><br>2.5               |
| <b>Olio</b><br>MULTIGRADO SAE 10W30     | <b>Capacità olio (litri)</b><br>0.8    | <b>Consumo carb. (gr x Kw x h)</b><br>280.2  | <b>Dimensioni (mm)</b><br>332x384x416                   | <b>Peso (Kg)</b><br>33                                 |

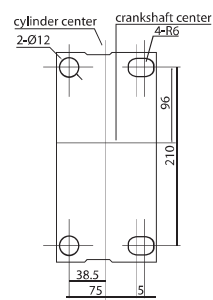
### Albero motore



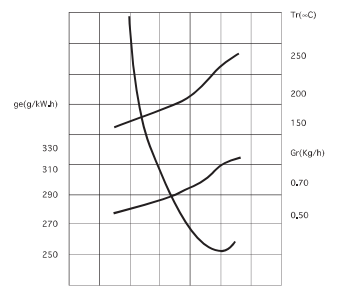
KD 50 FG4E



Ingombro



Ingombro basamento



### Dimensioni

