



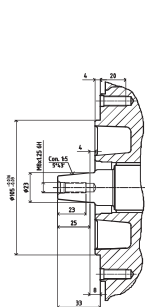
Se non specificato il motore viene fornito con il filtro senza ciclone (come da figura).



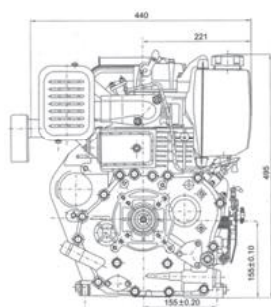
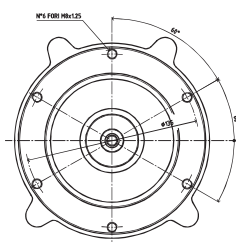
### Caratteristiche tecniche

<b>Alesaggio (mm)</b> 86x70	<b>Cilindrata (cc)</b> 406	<b>Rapporto di compressione</b> 19:1	<b>Potenza continua (Hp/rpm)</b> 7.7/3000 - 9.0/3600	<b>Potenza massima (Hp/rpm)</b> 8.8/3000 - 10.0/3600
<b>Giri/minuto (rpm)</b> 3000 - 3600	<b>Avviamento</b> MANUALE	<b>Senso di rotazione (volano)</b> ORARIO	<b>Carburante</b> GASOLIO	<b>Capacità serbatoio (litri)</b> 5.5
<b>Olio</b> MULTIGRADO SAE 10W30	<b>Capacità olio (litri)</b> 1.65	<b>Consumo carb. (gr x Kw x h)</b> 275.1	<b>Dimensioni (mm)</b> 471x440x494	<b>Peso (Kg)</b> 46

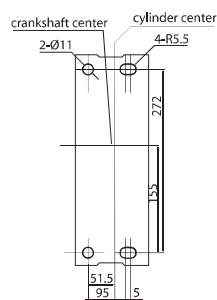
### Albero motore



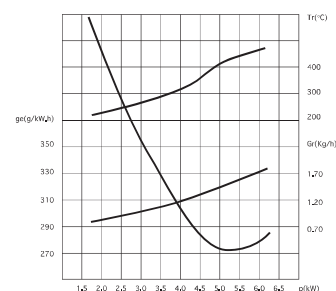
KD 100 FG5



Ingombro



Ingombro basamento



### Dimensioni

